

BREAKINGPOINT VIRTUAL EDITION (VE) VIRTUALIZED APPLICATION AND SECURITY TESTING

ixia
DATA SHEET

BreakingPoint ^{VE}

PROBLEM: WITH VIRTUALIZATION OF NETWORK AND SECURITY FUNCTIONS, EVERYTHING KNOWN BECOMES UNKNOWN

Today's networks need to adapt quickly, and facilitate change. Strategies like network functions virtualization (NFV) and software defined networking (SDN) provide powerful flexibility gains by moving traditional application and security functions—like application delivery, load balancing, data packet inspection (DPI), firewall, intrusion prevention system (IPS), and sandbox components—off dedicated hardware onto virtualized servers. Virtualized tools need to deliver the same or better performance and similar security efficacy than the traditional hardware appliances. Without a way to properly test these virtualized application and security devices, customer quality of experience (QoE) is at risk.

SOLUTION: AN EASY-TO-USE TESTING ECOSYSTEM FOR VIRTUALIZED INFRASTRUCTURE

Ixia's BreakingPoint VE provides scalable real-world application and threat simulation in a deployment model that fits IT budgets by leveraging virtualization and industry-standard hardware platforms. To build resilient physical or virtual networks, you can rely on by using BreakingPoint VE to maximize security investments and optimize network architectures. Now virtualization-enabled, market-proven BreakingPoint application offers cost-effective, elastic, and sharable virtualized test capabilities that are quickly deployed and scaled across geo-diverse enterprise-wide networks.

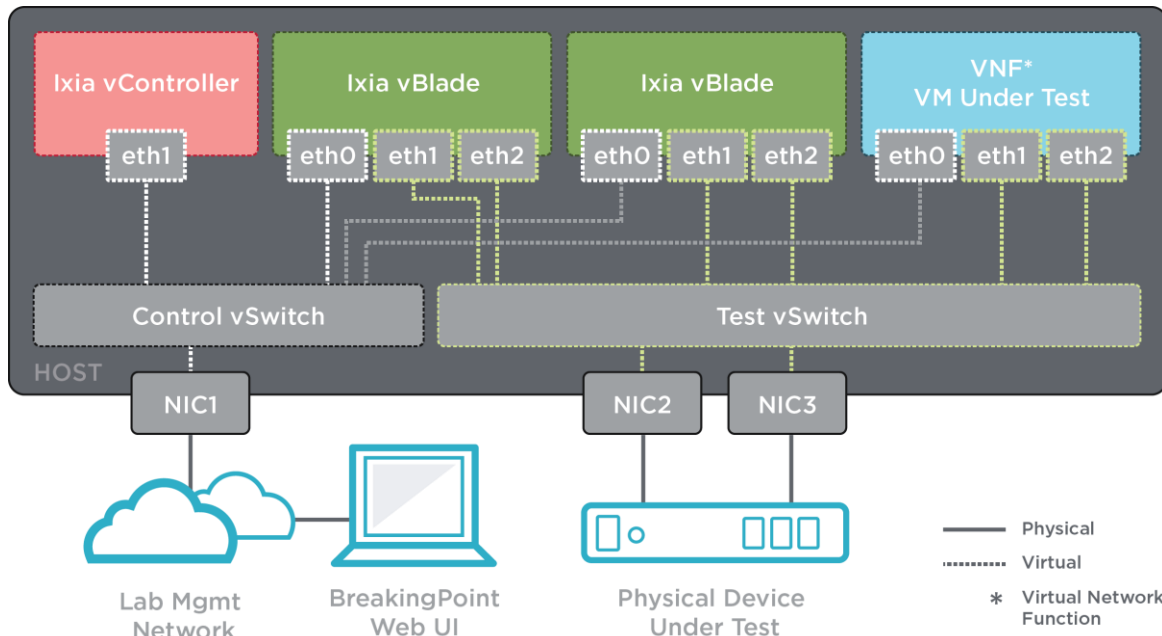
Just as important as the high-fidelity and flexible test functionality, the BreakingPoint VE subscription model is aligned with enterprise project-based IT OPEX funding

HIGHLIGHTS

- Validate functionality of application-aware devices and networks - virtual and physical
- Optimize virtual or physical network security devices such as IDS/IPS, DLP, UTM, NGFW, WAF, and web proxy
- Validate distributed denial of service (DDoS) and other attack defenses over cloud
- Get the best value when evaluating new security devices by performing head-to-head "bake-offs"
- Realize the savings of cloud and virtual network functions (VNF) without compromising security
- Keep current with new applications and threats Intelligence updates every two weeks
- Flexibly deploy Ixia virtual test tools that can be easily moved, changed, or scaled up and down
- Validate NFV migration by testing within OpenStack-based private clouds
- Leverage subscription-based licensing enabling low startup cost and flexibility of pay-as-you-grow OPEX model

VISIT IXIACOM.COM FOR MORE DETAILS ON THE BREAKINGPOINT PRODUCT

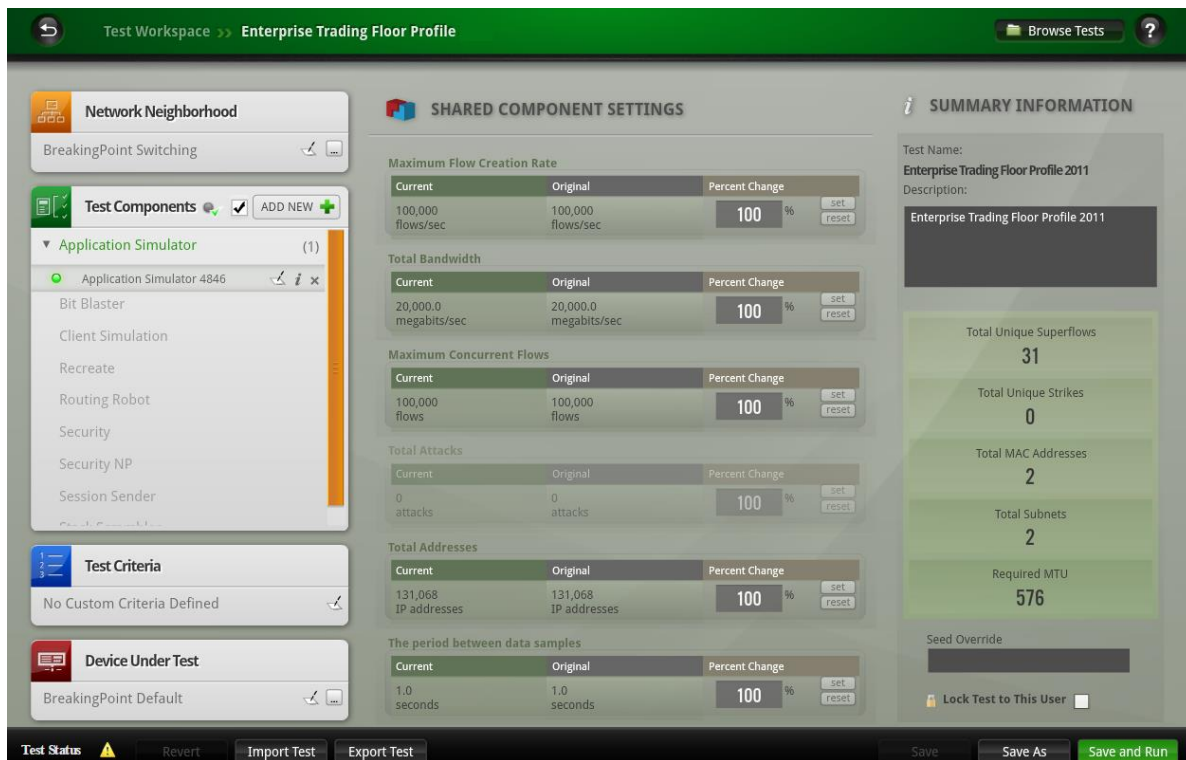
requirements. Acquire the tools quickly, scale up and scale down as projects needs demand, and deploy anywhere with virtualization speed and simplicity.



BreakingPoint VE deployment for both virtual and physical device tests

KEY FEATURES:

- Simulates more than 300 real-world application protocols
- Allows for customization and manipulation of any protocol, including raw data
- Generates a mix of protocols at high speed with realistic protocol weight
- Supports more than 37,000 attacks and malwares
- Delivers from a single port all types of traffic simultaneously, including legitimate traffic, DDoS, and malware
- Bi-monthly Application and Threat Intelligence (ATI) subscription updates ensure you're are current with the latest applications and threats
- Subscription based licensing model comes an all-inclusive license that reduces startup cost
- Seamless transition between hardware and virtual platforms enables easy translation of functional and performance testing in physical or virtual environments
- BreakingPoint supports all major Hypervisors allowing deployment in a wide variety of VM environments
- Common licensing server shared among BreakingPoint VE, IxLoad VE, and IxNetwork VE



BreakingPoint GUI configured with an enterprise trading floor application mix test

SPECIFICATIONS

FEATURE	VIRTUAL SYSTEM CONTROLLER	VIRTUAL BLADE
Maximum # of Virtual Ports	96	8 (depends on host system)
Maximum # of Virtual Load Modules	12	N / A
Maximum # of Users	20	8

FEATURE	VIRTUAL SYSTEM CONTROLLER	VIRTUAL BLADE
Hardware Specifications	Minimum 8vCPUs, 8GB RAM, 110GB HDD	Recommended 4vCPUs, 8GB RAM, 14GB HDD <ul style="list-style-type: none"> 1 vCPU / 2GB RAM (performance & scalability = low) 2 vCPU / 4GB RAM (performance & scalability = medium) 4 vCPU / 8GB RAM (performance & scalability = high)
Guest OS	<ul style="list-style-type: none"> Based on CentOS 6.6 	<ul style="list-style-type: none"> Based on CentOS 7.0
Distribution/Packaging (Linux version)	<ul style="list-style-type: none"> VMware: <ul style="list-style-type: none"> OVA (manual deployment) KVM: <ul style="list-style-type: none"> QCOW2 (manual deployment) Upgrade-only: <ul style="list-style-type: none"> BPS (upgrade already deployed System Controller) 	<ul style="list-style-type: none"> VMware: <ul style="list-style-type: none"> Automatic deployment through System Controller OVA (manual deployment) KVM: <ul style="list-style-type: none"> Automatic deployment through System Controller QCOW2 (manual deployment) Upgrade-only: <ul style="list-style-type: none"> Automatic upgrade through System Controller

QUALIFIED AND COMPATIBLE ENVIRONMENTS

BreakingPoint VE is designed to work best when used in a qualified environment. Our recommendation is to always use one of the qualified versions of the virtualization platforms.

BreakingPoint VE is also compatible with different environments. In case there are issues encountered in these environments, Ixia will make reasonable efforts to address them, but cannot guarantee specific outcomes or results. In such rare cases, the proposed solution would be to use the qualified environment.

CATEGORY		QUALIFIED	COMPATIBLE
Hypervisor and Host OS		<ul style="list-style-type: none"> VMware vSphere ESXi 6.X KVM over CentOS 7.X KVM over Ubuntu 14.04 LTS 	<ul style="list-style-type: none"> VMware vSphere ESXi 5.X KVM over CentOS 6.X KVM over Ubuntu 12.04 LTS KVM over RHEL 6.X KVM over RHEL 7.X
Management and Orchestration		<ul style="list-style-type: none"> OpenStack Mitaka and Liberty (vanilla distribution)ⁱ 	<ul style="list-style-type: none"> VMware vCenter 5.Xⁱ VMware vCenter 6.Xⁱ Other OpenStack-based platforms (vanilla distributions)ⁱ Other OpenStack-based platforms (vendor-specific distributions)ⁱ
Network Connection and vNIC Driver	Performance Acceleration Enabled (DPDK)	<ul style="list-style-type: none"> VMXNET3 (VMware) 	N/A
	Performance Acceleration Disabled (DPDK)	<ul style="list-style-type: none"> VMXNET3 (VMware) VIRTIO (KVM) 	
Virtual Switch Model		<ul style="list-style-type: none"> Virtual Standard Switch (only on VMware) Linux Bridges (only on KVM) Open Virtual Switch (only on OpenStack)ⁱ 	<ul style="list-style-type: none"> Virtual Distributed Switch (only on VMware)ⁱ Open Virtual Switch (only on KVM)ⁱ Linux Bridges (only on OpenStack)ⁱ
Physical CPU		<ul style="list-style-type: none"> DPDK Capable CPU Required (Extensions SSSE3 or above) 	N/A

PROTOCOLS AND FEATURES

BreakingPoint-VE is powered by Ixia's application and threat intelligence (ATI) program that delivers a wide variety of applications and attacks to emulate traffic mix and security threats of small medium or large enterprises, service providers or government organizations at scale. The application and attack emulation is complemented with BreakingPoint's comprehensive network stack that simulates network components like IPV4, IPV6, IPsec, LTE, 3G/4G, and DNS, helping in orchestrating a wide variety of network environments.

SPECIFICATION	DESCRIPTION
Applications	300+ application protocols, including Yahoo!® Mail and Messenger, Google® Gmail, Skype®, BitTorrent™, eDonkey, RADIUS, SIP, RTSP, RTP, HTTP, SSL, Facebook®, Twitter Mobile, YouTube®, and Apple® FaceTime®, as well as other mobile, social, and gaming protocols – with Multicast support
Wireless Interfaces (IPv4 only)	<ul style="list-style-type: none"> • S1-U (eNodeB and SGW sides) • S1-MME (eNodeB side) • SGi (PDN side) • S5/8 (SGW and PGW sides) • S11 (MME and SGW sides) • Wireless Protocols Supported: • S1AP • GTP-C v1, GTP-C v2, GTP-U v1 • SCTP (over UDP or IP)
Wireless Operational Modes (IPv4 only)	<ul style="list-style-type: none"> • User Equipment • eNodeB/MME (GTPv2) • eNodeB/MME/SGW (GTPv2) • eNodeB (S1AP/ GTPv1) • SGW/PGW • MME/SGW/PGW • PGW
Network Access	<ul style="list-style-type: none"> • IPv4/IPv6 Static Hosts • IPv4/IPv6 External Hosts • IPv4 DHCP Client/Server • VLAN • IPv4/IPv6 Router • IPv4/IPv6 DNS

SPECIFICATION	DESCRIPTION
Test Methodologies/Labs	<ul style="list-style-type: none"> • RFC 2544 Lab • Session Sender Lab • Multicast Lab • Lawful Intercept Lab • DDoS Lab
Security Exploits/Malware	<ul style="list-style-type: none"> • 36,000+ total attacks • 6,000+ exploits • 30,000+ malware • 100+ evasion classes <p>Attacks include:</p> <ul style="list-style-type: none"> • IP-based DoS attack types: <ul style="list-style-type: none"> ○ ICMP flood test case ○ ICMP fragmentation test case ○ Ping flood test case • UDP-based DoS attack types: <ul style="list-style-type: none"> ○ UDP flood test case ○ UDP fragmentation test case ○ Non-spoofed UDP flood test case • TCP-based DoS attack types: <ul style="list-style-type: none"> ○ Syn flood test case ○ Syn-ack flood test case ○ Data ack and push flood test case ○ Fragmented ack test case ○ Session attack test case • Application-layer attack types: <ul style="list-style-type: none"> ○ DNS flood attack case ○ Excessive verb attack case ○ Recursive GET Floods ○ Slow POSTs • Botnets:

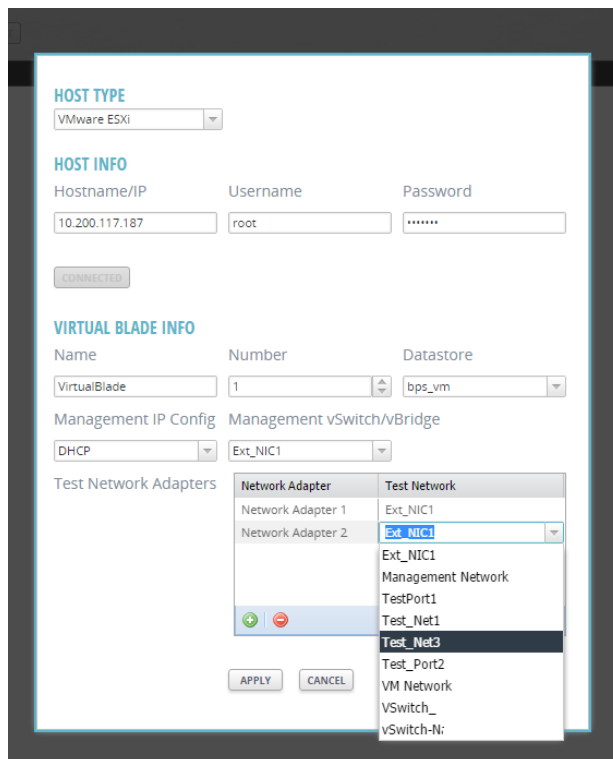
SPECIFICATION	DESCRIPTION
	<ul style="list-style-type: none"> Zeus SpyEye BlackEnergy Duqu Pushdo Cuttail <p>*Go to Ixiacom.com to get more details about ATI attacks</p>
Licensing	<ul style="list-style-type: none"> All-inclusive license unlocks all features All new features available at no additional cost during subscription duration Each licensing unit enables: <ul style="list-style-type: none"> 1G-Tier - 1Gbps of throughput, 2M concurrent super flows and single security and security NP component 10G-Tier - 10Gbps of throughput, 20M concurrent super flows and two security and security NP component

PRODUCT CAPABILITIES

SIMPLE AND EASY VM DEPLOYMENT

Deploying and adding BreakingPoint VM card and test port can be achieved through the BreakingPoint's GUI. It's a simple process of providing credentials to the VM Host and there on the rest of the process has been entirely automated to do the VM deployment and getting it added to the BreakingPoint chassis.

BreakingPoint VM deployment through the GUI Admin page.



The screenshot displays the BreakingPoint GUI Admin page for VM deployment. The interface is organized into several sections:

- HOST TYPE:** A dropdown menu set to "VMware ESXi".
- HOST INFO:** Fields for Hostname/IP (10.200.117.187), Username (root), and Password (masked with dots). A "CONNECTED" status indicator is shown below.
- VIRTUAL BLADE INFO:** Fields for Name (VirtualBlade), Number (1), and Datastore (bps_vm).
- Management IP Config:** A dropdown menu set to "DHCP".
- Management vSwitch/vBridge:** A dropdown menu set to "Ext_NIC1".
- Test Network Adapters:** A table with two columns: "Network Adapter" and "Test Network".
 - Network Adapter 1 is mapped to Ext_NIC1.
 - Network Adapter 2 is mapped to Ext_NIC1.

At the bottom, there are "APPLY" and "CANCEL" buttons. A list of available test networks is shown on the right side of the "Test Network" column, including Ext_NIC1, Management Network, TestPort1, Test_Net1, Test_Net3, Test_Port2, VM Network, VSwitch_, and vSwitch-Ni.

APPLICATION AND THREAT INTELLIGENCE (ATI) PROGRAM

Ixia's ATI program consists of several engineering units spread across the world, engaging in coordinated research and leveraging years of experience in understanding application behaviors, malicious activities, and attack methods to ensure BreakingPoint software is always updated and always current. The ATI team uses advanced surveillance techniques and cutting-edge research to identify, capture, and rapidly deliver the intelligence needed to conduct meaningful and thorough performance and security validation under the most realistic simulation conditions. Releasing updates every two weeks for more than 10 years, the ATI program comprises a library of 37,000+ attacks (Exploits, Malwares, DDoS, etc.), 330+ popular applications, and over 2,000 canned tests.

Additionally, the ATI program ensures:

- Newer applications and attacks can be incorporated in BreakingPoint without the need of any firmware or OS updates
- Users stay up to date with the ever-changing cyber-world—new applications are added and popular applications are updated to current versions
- Monthly malware packages contain fast-changing malware and botnet attacks
- Well researched, real-world application mixes that emulate traffic patterns of diverse demographics and business verticals.

The screenshot displays the Ixia BreakingPoint GUI. At the top, there's a dark header with the 'ixia' logo and 'WEB APPS'. Below this, a navigation bar shows 'USERS' and 'SYSTEM SETTINGS'. The main content area is divided into two columns. The left column contains a sidebar with menu items: 'Updates' (highlighted), 'System time and date', 'Backup', 'Restore', 'Database', 'Authentication', and 'Maintenance'. The right column shows the 'SYSTEM INFORMATION' section with a table of system details and three action buttons: 'UPDATE SYSTEM', 'FACTORY REVERT', and 'WIPE SYSTEM'. Below this is the 'INSTALLED APPLICATIONS' section with a table listing installed components and their versions, and an 'UPDATE PACKAGES' button.

OS Type	PerfectStorm1
Product Build	262287
Strike Build	264493
WAF Version	2.0.4.155
Disk Usage	5% used
Serial Number	091087

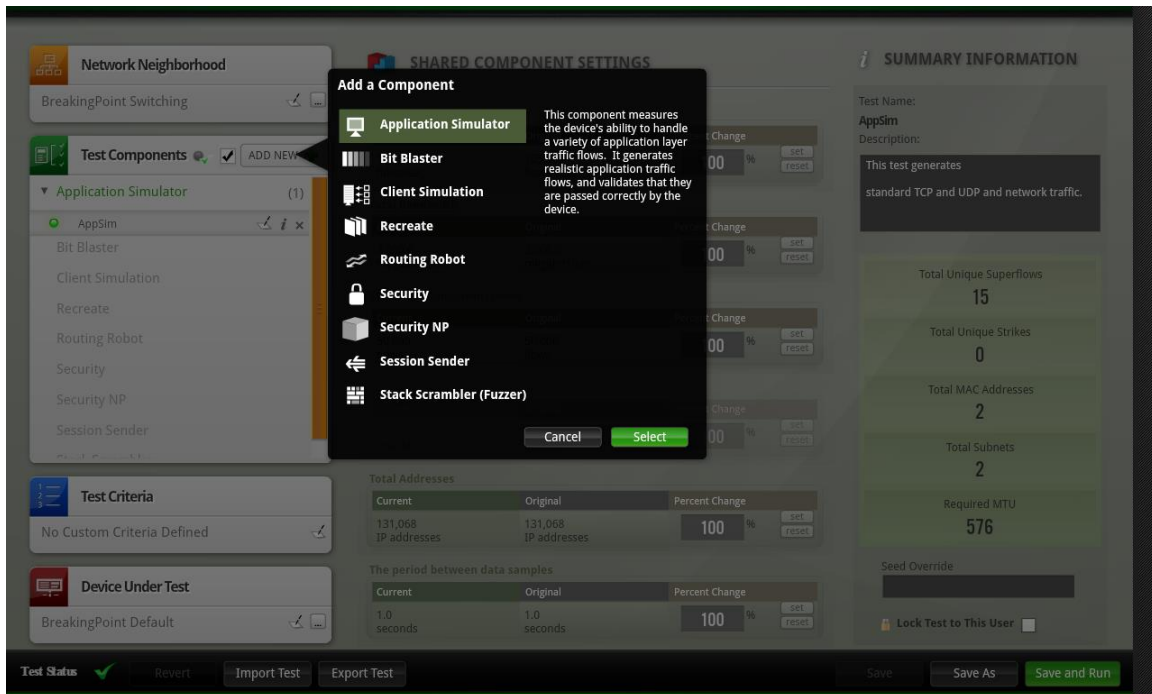
BREAKINGPOINT	Version: 8.0.1
ATI STRIKE PACK	Version: 264493
VM DEPLOYMENT	Version: 2.0.1.43

ATI packages can be updated through the intuitive BreakingPoint GUI

BREAKINGPOINT TEST COMPONENTS

BreakingPoint offer a single Web GUI for management results in simple, central control of all components and capabilities. Test components helps configure legitimate application, malicious, malformed and stateless traffic to validate application-aware devices and networks.

Test Components	
Application Simulator	Allows users to create mix of applications and run tests in 2-Arm mode (BreakingPoint being the client and server) to test application-aware devices
BitBlaster	Transmits layer 2 frames and analyzes a device's ability to handle stateless malformed or normal traffic at high speed
Client Simulation	Allows users to generate client traffic via Super lows against real servers (device under test) in 1-Arm mode (BreakingPoint being the client)
Live AppSim	Amplifies BreakingPoint traffic realism by running TrafficREWIND summary configurations that replicate the dynamic nature of production networks and applications; it leverages TrafficREWIND's ability to record and synthesize production traffic characteristics over extended periods of time.
Recreate	Helps users to import captured traffic from network and replay it through BreakingPoint ports
Routing Robot	Determines if a DUT routes traffic properly by sending routable traffic from one interface and monitoring the receiving interface; this is useful to perform RFC2544 and network DDoS testing
Security	Measures a device's ability to protect a host by sending strikes and verifying that the device successfully blocks the attacks
Security NP	This subset of Security allows users to send malware traffic at higher loads
Session Sender	Enables testing of pure TCP and/or UDP behavior and performance and is also capable of performing advanced DDoS attacks
Stack Scrambler	Validates integrity of different protocol stacks by sending malformed IP, TCP, UDP, ICMP, and Ethernet packets (produced by a fuzzing technique) to the DUT



BreakingPoint purpose-built test components

APPLICATION SIMULATION

BreakingPoint simulates over 300 real-world applications, each configurable with application actions (flow) to simulate multiple user behavior and dynamic content. BreakingPoint also provides 100s of predefined application mix profiles representative of various enterprise and carrier networks.

Content realism is critical in validating performance of application-aware devices and networks, as it has a direct impact on inspection performance. BreakingPoint offers various functionality to easily parametrize applications with representative payloads such as:

- Tokens that allow users to randomize data as part of the application flow to prevent devices from accelerating bandwidth or detecting static data patterns.
- Markov text generation, which is a unique way of converting documents into new documents to generate random data by word instead of by character, allowing the data to look realistic, but at the same time to be dynamic.
- Dictionary functionality that allows users to input a table of rows as an input to a field. These are highly useful for emulating scenarios such as brute force attacks, where a user can input a huge list of passwords that are randomly sent one after the other through the “password” field in a flow.
- Dynamic file generation capability that allows users to generate different types of attachments like exe, jpg, pdf, flash, and mpeg and helps in testing a device’s file handling or blocking capabilities.

- Multi-Language capability that allows users to send emails, chats, or texts in languages like French, Spanish, German, and Italian, making the contents demographically realistic.

Add/Remove Super Flows

Clear

Search

Displaying 100 of 3922 | [Get more results](#)

Super Flow Search Results

Name		
AOL Mail NOV 2013		
Apache Cassandra DB		
Apache Cassandra DB Start Up		
Apache Cassandra DB Start Up and Registration		
Apple Bonjour Multicast DNS Service Discovery		
AppleJuice		
AppLine Basic Audio Call		
AppLine Demo Superflow		
AppLine Simple Chat		
BACnet/IP Read File		
BACnet/IP Time Synchronization		
BACnet/IP Who-Has/I-Have Object Query		
BACnet/IP Who-Is/I-Am Device Discovery		
BACnet/IP Write File		

Associated Super Flows

Name	
Angry Birds Friends September 2015 Facebook server overload error	
ClientSim Facebook	
Twitter	
Google Earth Search	
Google Mail-English	
HTTPS Simulated	
Linkedin_1301	
BitTorrent Enterprise	
Amazon_1302	
Bing Search	
AOL Instant Messenger	
BBC iPlayer	
KakaoTalk Chat	

Add Selected

OK

BreakingPoint provides flexibility to emulate a variety of apps and protocols that can be assembled to create real-world application mixes

26601 Agoura Road | Calabasas, CA 91302 USA | Tel + 1-818-871-1800 | www.ixiacom.com
915-3618-01-7061 Rev B

Page 12

```
Last-Modified: Mon, 12 Jul 13 05:56:39 GMT
Date: Wed, 22 Jun 14 19:16:20 GMT
Connection: Keep-Alive
Server: BreakingPoint/1.x
Content-Type: text/html
Content-Length: 2037

<!DOCTYPE html PUBLIC "-//W3C//DTD XHTML 1.0
Transitional//EN"
"http://www.w3.org/TR/xhtml1/DTD/xhtml1-
transitional.dtd"><html
xmlns="http://www.w3.org/1999/xhtml"><head><met
a content="text/html; charset=UTF-8" http-
equiv="Content-Type"/><title>broach the subject of
his</title><style type="text/css">p { vertical-align: text-
bottom; background-color: #1ec4cc; background-
image: none; display: inline; list-style-image: none;
clear: right; font-family: cursive; border-width: thin;
}</style></head> <body><p>Copyright (C) 2005-2011
BreakingPoint Systems, Inc. All Rights
Reserved.</p><p><h5><q>Aterrible country,
Mr.</q><q>Bickersteth and yourself has,
unfortunately</q><em>We sallied out at
once</em><u>Corcoran's portrait may not
have</u><b>Won't you have an egg</b><u>Who the
deuce is Lady</u>
```

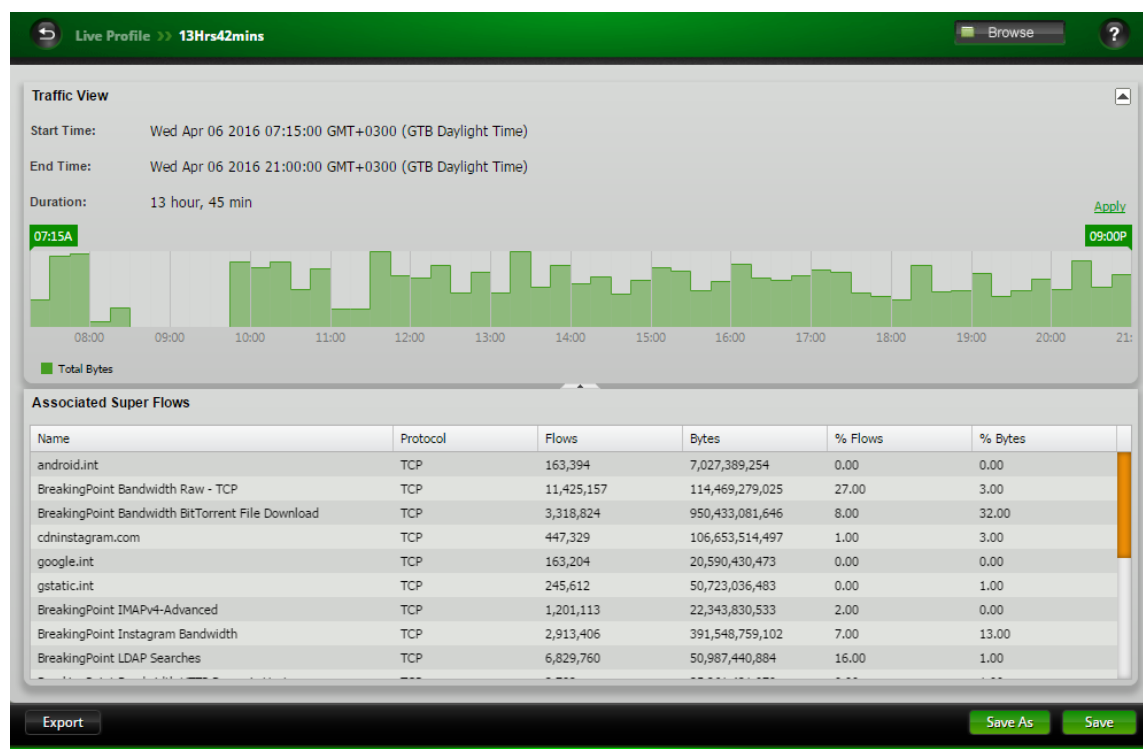
BreakingPoint generates real-world application and security strike traffic; this example shows an HTTP request and response

TRAFFICREWIND AND LIVE APPSIM

Ixia's new TrafficREWIND solution complements BreakingPoint to easily translate production network insight into test traffic configurations with high fidelity. TrafficREWIND is a scalable, real-time architecture that uses production traffic metadata to record and synthesize traffic characteristics over extended periods of time (up to 7 days). The resulting test configuration from TrafficREWIND is used in BreakingPoint's Live AppSim test component. Live AppSim adds a new testing dimension by empowering users not only replicate traffic profiles with associated real-world applications, but also dynamically changing traffic composition over time to model the temporal nature of production networks and applications in the lab.

Live AppSim is used to run TrafficREWIND exported traffic summary configurations, opening up unprecedented test possibilities:

- Faster fault analysis and reproduction capabilities
- Reference architectures and pre-deployment validation with production-like application mixes
- Relevant what-if scenarios by combining real production traffic with other test traffic, including security strikes, incremental applications, or even fuzzing

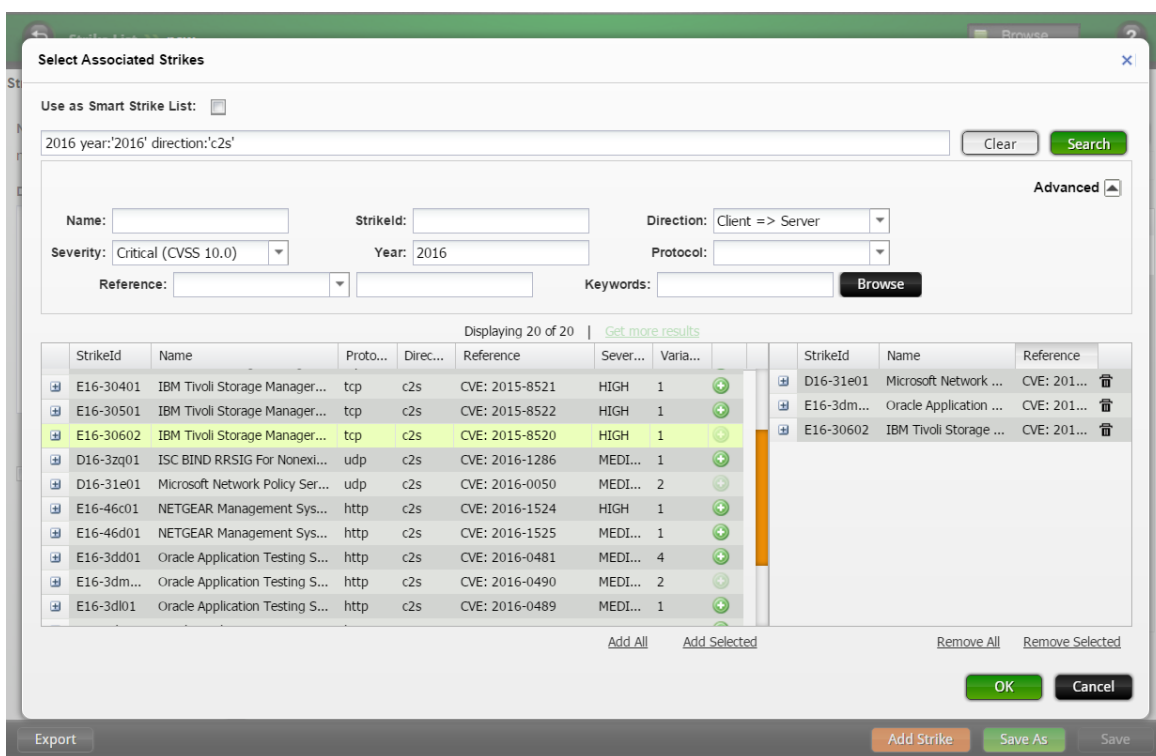


Live Profile created by importing a TrafficREWIND traffic summary configuration

COMPREHENSIVE SECURITY

BreakingPoint delivers the industry's most comprehensive solution test network security devices—such as IPSs, IDSs, firewalls, and DDoS mitigation. It measures a device's ability to protect a host by sending strikes and verifying that the device successfully blocks the attacks. Simply select a Strike List and an Evasion Setting to create a security test, or use one of the default options.


- Supports over 37,000 strikes and malware and the attacks can be obfuscated by over 100 evasion techniques
- Emulate botnets, from zombie to command and control (C&C) communication
- Simulates a variety of volumetric, protocol, and application-layer DDoS attacks
- Generates legitimate and malicious traffic from the same port—purpose-built hardware design allows sending all types of traffic simultaneously from a single port, with full control of the weight/mix of legitimate traffic, DDoS and other attacks, malware, and fuzzing



Select Associated Strikes

Use as Smart Strike List: ☐

2016 year:'2016' direction:'c2s' Clear Search

Advanced 

Name: Strikeld: Direction: Client => Server

Severity: Critical (CVSS 10.0) Year: 2016 Protocol:

Reference: Keywords: Browse

Displaying 20 of 20 | [Get more results](#)

StrikeId	Name	Proto...	Direc...	Reference	Sever...	Varia...
E16-30401	IBM Tivoli Storage Manager...	tcp	c2s	CVE: 2015-8521	HIGH	1
E16-30501	IBM Tivoli Storage Manager...	tcp	c2s	CVE: 2015-8522	HIGH	1
E16-30602	IBM Tivoli Storage Manager...	tcp	c2s	CVE: 2015-8520	HIGH	1
D16-32q01	ISC BIND RRSIG For Nonexi...	udp	c2s	CVE: 2016-1286	MEDI...	1
D16-31e01	Microsoft Network Policy Ser...	udp	c2s	CVE: 2016-0050	MEDI...	2
E16-46c01	NETGEAR Management Sys...	http	c2s	CVE: 2016-1524	HIGH	1
E16-46d01	NETGEAR Management Sys...	http	c2s	CVE: 2016-1525	MEDI...	1
E16-3dd01	Oracle Application Testing S...	http	c2s	CVE: 2016-0481	MEDI...	4
E16-3dm...	Oracle Application Testing S...	http	c2s	CVE: 2016-0490	MEDI...	2
E16-3dl01	Oracle Application Testing S...	http	c2s	CVE: 2016-0489	MEDI...	1

Add All Add Selected Remove All Remove Selected

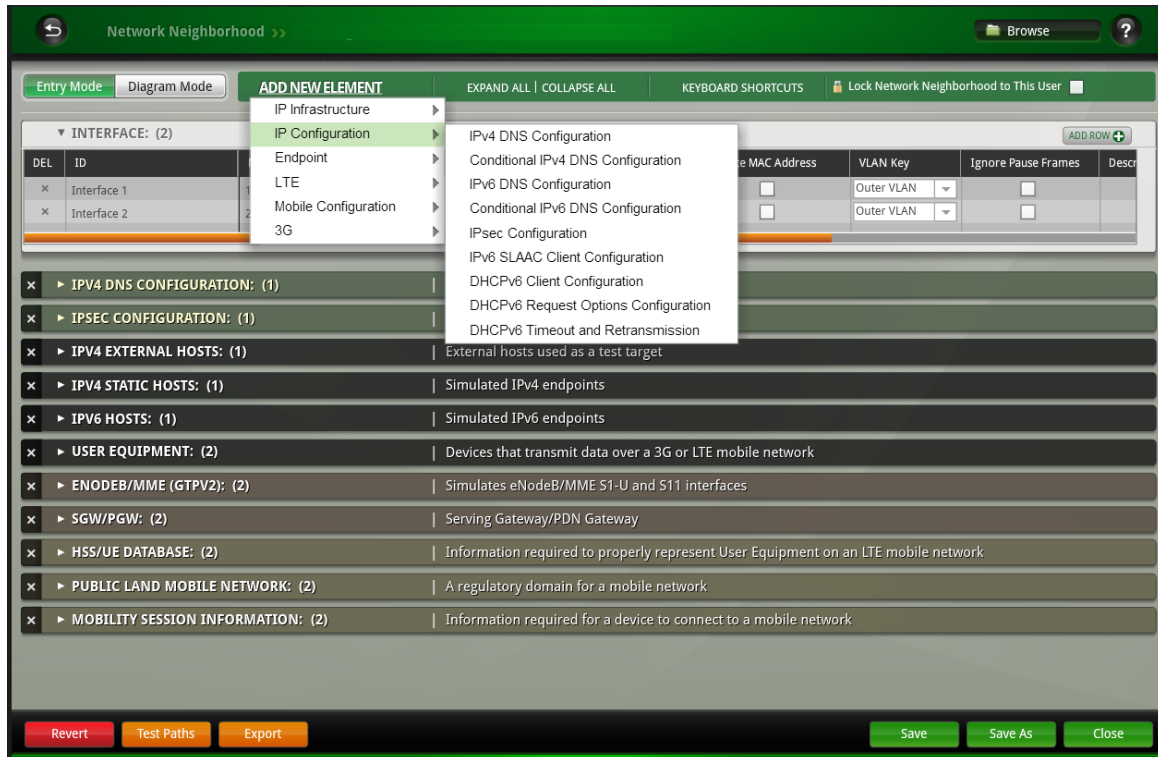
OK Cancel

Export Add Strike Save As Save

An intelligent search bar makes it easier to browse through the 37,000+ attacks

NETWORK NEIGHBORHOOD

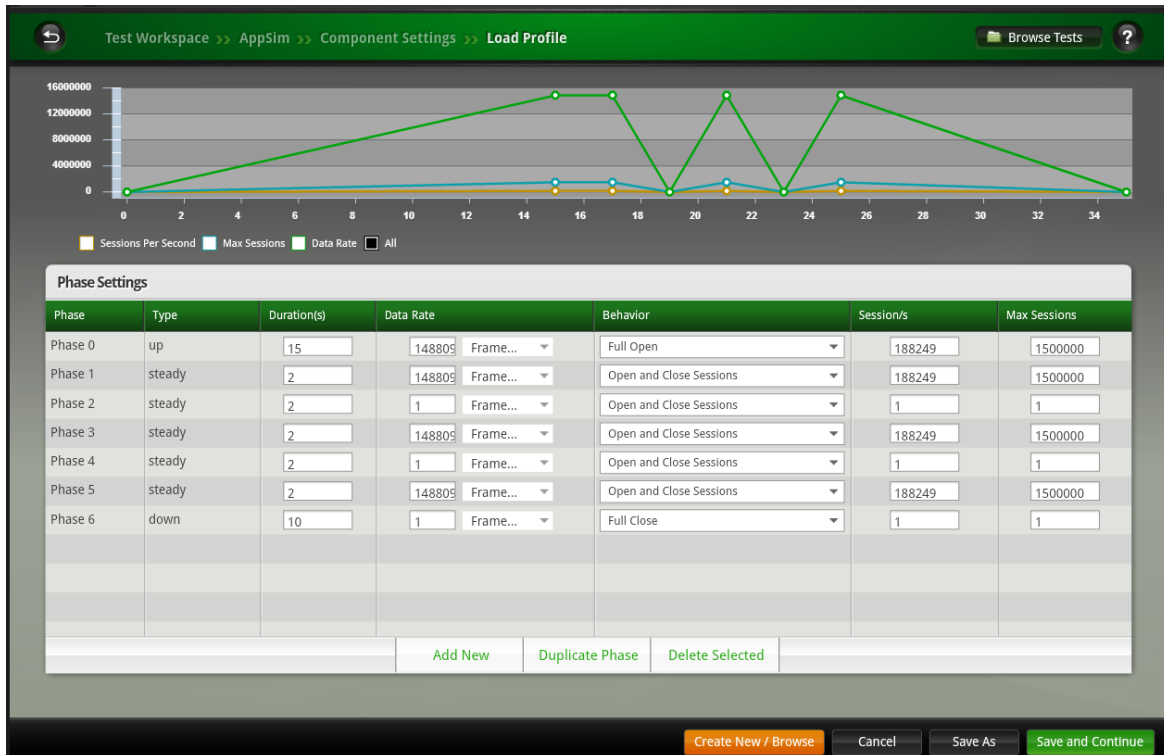
BreakingPoint's Network Neighborhood provides flexibility for the user to create simple to highly complex network environments. It includes support of commonly used network elements like IPV4, IPV6, VLAN, IPsec, DHCP, DNS and for 3G/4G mobile infrastructure network elements.



A complex mobile Network Neighborhood created in BreakingPoint that include some key network elements

LOAD PROFILES

Load profiles and constraint provides users options to have more granular controls over the test run. This helps users create varied network conditions and load dynamics like rate controls, burst profiles, and Poisson distribution.

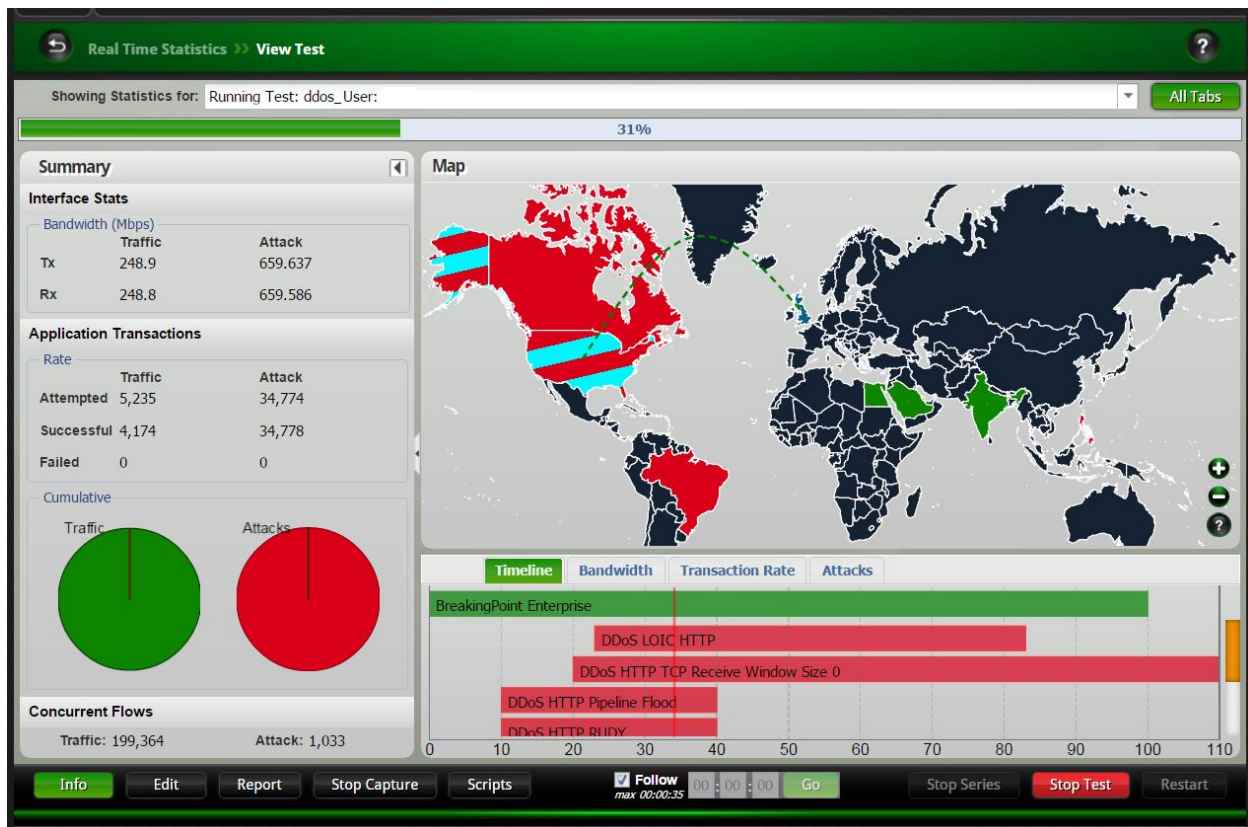


A BreakingPoint MicroBurst Load profile

PRE-DEFINED TEST METHODOLOGIES/LABS

Leverage extensive automation and wizard-like labs that address many use-case scenarios, including validation of lawful intercept and data loss prevention (DLP) solutions, RFC2544, DDoS, Session Sender, and Multicast.

In addition, a REST and TCL API are provided for building and executing automated tests.

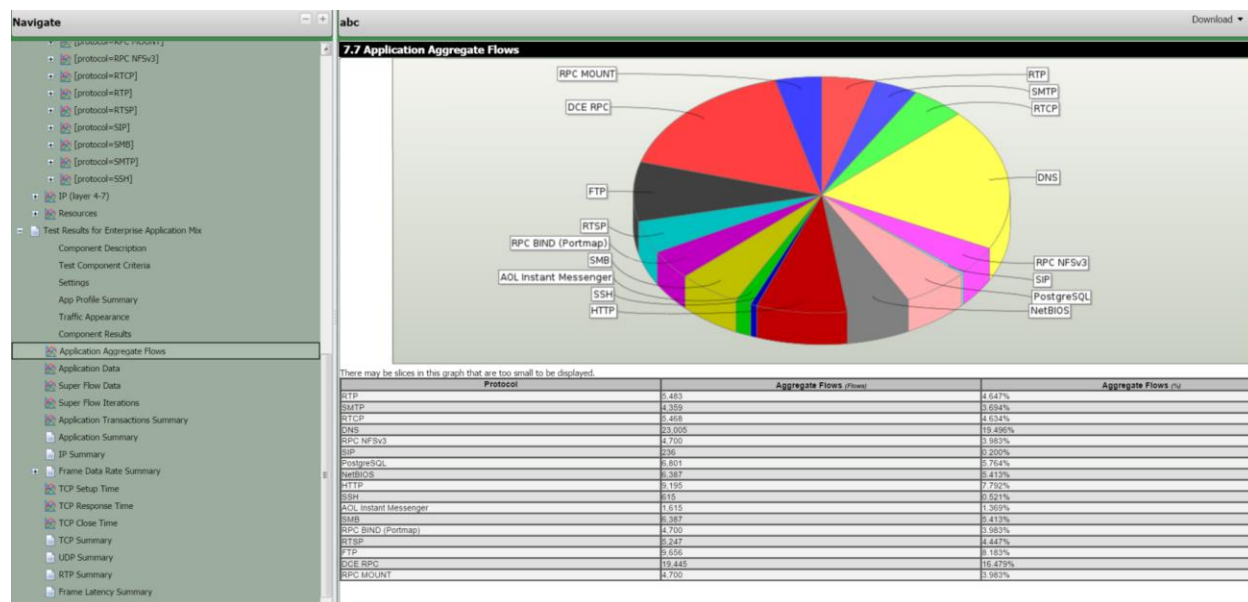


A test configured with DDoS Lab

BUILT-IN REPORTING

BreakingPoint's extensive reports provide detailed information about the test, such as the components used in a test, addressing information, DUT profile configuration, system versions, and results of the test.

- All reports include an aggregated test results section, which provides the combined statistics for all of the test components. It also includes the information over time, to pin-point a potential error within the time-slot it happened.
- All reports are automatically generated in HTML and viewable with a web browser; however, you may export the test results in XLS, HTML, PDF, RTF, CSV, or ZIP (CSV files). Reports are automatically generated each time a test is run and are viewable from the Results page.
- Comparison Report feature allows you to run multiple iterations of the same test on different load modules or different ports and compare the results. You have the option of comparing all sections of the tests, or you can select only certain sections to be included in the comparison.



A segment of BreakingPoint report showcasing flow mix

TECHNOLOGY SOLUTIONS

VISIT IXIACOM.COM FOR MORE INFORMATION ON
BREAKINGPOINT AND IXIA VIRTUALIZATION SOLUTIONS

- BreakingPoint—Applications and Security Testing
- BreakingPoint Virtual Edition (VE)—Virtualized Application and Security Testing
- IxLoad Virtual Edition (VE)—Virtualized Multiplay Services Testing
- IxNetwork Virtual Edition (VE)—Virtualized Network Performance Testing

ORDERING INFORMATION

939-9600

BreakingPoint Virtual Edition (VE) SUBSCRIPTION FLOATING License. INCLUDES access to Application and Threat Intelligence Program (ATI) and updates for the purchased term (List price is per unit, per year). REQUIRES: License term to be specified (MUST be purchased in multiples of years). Supports 1 Gig throughput per unit.

939-9610

BreakingPoint Virtual Edition (VE) SUBSCRIPTION 10G FLOATING Counted License. INCLUDES access to Application and Threat Intelligence Program (ATI) and updates for the purchased term (List price is per unit, per year). REQUIRES: License term to be specified (MUST be purchased in multiples of years).

IXIA WORLDWIDE HEADQUARTERS

26601 AGOURA RD.
CALABASAS, CA 91302

(TOLL FREE NORTH AMERICA)

1.877.367.4942

(OUTSIDE NORTH AMERICA)

+1.818.871.1800

(FAX) 818.871.1805

www.ixiacom.com

IXIA EUROPEAN HEADQUARTERS

IXIA TECHNOLOGIES EUROPE LTD
CLARION HOUSE, NORREYS DRIVE
MAIDENHEAD SL6 4FL
UNITED KINGDOM

SALES +44.1628.408750

(FAX) +44.1628.639916

IXIA ASIA PACIFIC HEADQUARTERS

101 THOMSON ROAD,
#29-04/05 UNITED SQUARE,
SINGAPORE 307591

SALES +65.6332.0125

(FAX) +65.6332.0127

ⁱ BreakingPoint VM deployment via "Administration>VM Deployment" is not supported in this environment.